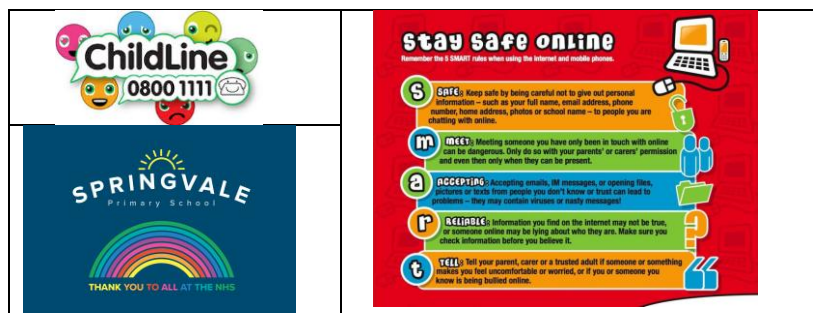


SPRINGVALE PRIMARY SCHOOL

01226 760930

Headteacher: Mr L McClure  
l.mcclure@springvaleprimary.org  
www.springvaleprimary.org  
@SpringvalePS



Wednesday 27<sup>th</sup> May 2020

## Update to Provision Offer from 1<sup>st</sup> June

Dear families,

We have been working with our families over the last 5 days to ensure the safe return of as many pupils as possible against the Government's plan to extend provision from Monday 1<sup>st</sup> June, assuming that their five key tests have been met. Thank you for your understanding and patience in working with us to allow time to train and support staff to ensure that they are ready to undertake a new, challenging role of supporting children in their bubbles and teaching in completely new circumstances.

Thank you also for adapting, where required, your working patterns and commitments to help us to make this work for everyone as safely as possible. As stated in the original letter, and confirmed in our latest newsletter just two days ago, we are doing all that we can to keep the bubbles closed and as safe as possible. We know that this might create issues for some parents and we thank you all for your support. We wanted to make parents aware that we are committed, as a Senior Leadership Team which includes our very active and committed Governing Body, to reviewing the guidance, advice and science on the bubbles each week. Where we feel that it is safe to relax this ruling we will do so through official communication and with as much prior notice to any modifications as possible.

Throughout the many meetings of the last few weeks it is clear that the key to our challenge is a gradual and safe extension of school and our offer. We will stagger the start, as set out, as well as carefully monitor the health and wellbeing of pupils, parents and staff and make adjustments where required as our numbers grow from 1<sup>st</sup> to 8<sup>th</sup> June inclusive. We know that many local schools have not enforced the same strict rules but we have to start out being cautious and keeping bubbles as tight as possible. Over the last three months of emergency provision we have supported an average number of just 8 pupils each day and, on average, just 4 adults from our staff team have been on site (plus the premises and catering/cleaning team). On Monday 8<sup>th</sup> June we expect to have 25 staff and between 80-90 pupils, plus one member of each of their families accessing our school grounds/building. This is a big change and must be managed carefully. We make no apology for taking your safety and that of your children and our staff very seriously indeed. Our full risk assessment continues to be refined alongside the latest DfE and LA guidance and this will be shared with all families via email, as part of our ethos around transparency, before 1<sup>st</sup> June.

One area that we have sought further guidance and advice on is the offer available to support our critical worker parents. All guidance documents state that this group is the priority group in school and that schools must do all that they can to support critical workers in their role in fighting COVID-19. As you may not be aware, from 20<sup>th</sup> March we have offered daily support for critical worker parents, including Bank Holidays and school holidays as well as working with the LA to source early starts and late finishes at a local school situated next to Barnsley and District General Hospital. To support parents working long shifts in key roles those parents have been permitted to use one, risk assessed childcare setting to supplement our emergency offer. This, at present, involves just three families. We had hoped to be able to support those families and their children to access their child's class and the social interactions with peers that they crave but this clarity and advice has not yet been forthcoming. **For that reason, for the time being, we will only be able to allow any parent/carer using another childcare provision to use the emergency group provision and not their child's own class.**

Any use of a childcare provision for members of the critical worker/emergency group must be communicated to school as soon as possible so that we can work with the provider to ensure that their own policies and risk assessments meet the current guidance and protect the other children and staff in their group. As stated above we will continue to review our current arrangements weekly. For the time being though, parents and staff have been reassured on school's reopening on the basis of the bubbles we have set up and it is important to maintain that confidence in safety coming first.

Kind Regards

Mr L McClure

Mrs K Thorogood

Headteacher

Chair of Governors