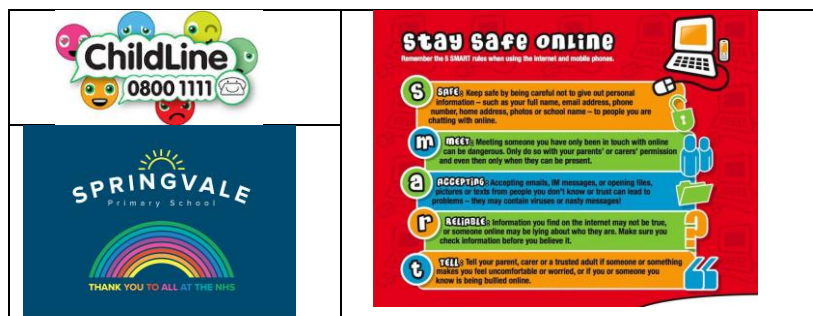


**SPRINGVALE PRIMARY SCHOOL**

**01226 760930**

**Headteacher: Mr L McClure**  
**l.mcclure@springvaleprimary.org**  
**www.springvaleprimary.org**  
**@SpringvalePS**



## Newsletter- Week 35

Dear families,

Welcome to our latest newsletter. As ever we have lots of information to share with you, so let's get started!

**Friday 12<sup>th</sup> June 2020**

**Extension of provision:** Another week, another week of returning pupils and another week of success and happy children! An email update went out on Tuesday 9<sup>th</sup> June to update you on our procedure for checking temperatures and what we have to do if a child registers with a temperature at or above 37.8. Please familiarise with this procedure as it is key to keeping everyone safe and preventing the risk of spreading any infected pupils or staff. The Government announced on Tuesday that it wasn't possible to carry out their original projection for all pupils to return to school for a month before the Summer holidays. We were very clear with our Governing Body, the Local Authority and our MP Miriam Cates that we were concerned about extending beyond the four targeted groups and the emergency provision as we had already used every space and every member of staff as part of our very complex plan! To be clear, we want every child back at school- playing, learning and achieving. Staff want to get back to normal more than anyone too! The original plan was deeply flawed by the Government's own guidelines asking us to reduce classes to a maximum of 15 as this halved the school's capacity for staff and space. We are working on a plan for transition for all year groups that we will announce shortly but it will depend on school being safe and the national picture being positive enough to execute the plan; as it stands we may only be able to offer virtual transition. An offer to all vulnerable and critical worker families who have made contact throughout the planning process will be in place each week day until we break up for the Summer Holidays from 8.40am to 3.30pm. The deadline for specific days for those who are booked in is Wednesday at noon.

**EYFS Transition Meeting:** We will have a transition meeting for new Nursery and Reception starters on Wednesday 24<sup>th</sup> June. This will be held between 5.30 and 6.30pm via zoom. An email link will be sent out the day before. Anyone accessing it should turn off their video and mute their microphone. There will be an opportunity for questions at the end of each section. Please use the reactions (thumbs up or wave) to indicate if you have a question when asked. A shorter, simpler welcome meeting will take place after the Summer Holidays. Next week we should be in a position to confirm transition arrangements for pupils and parents too. We hope to invite children and parents in in small groups for half a day before children start formally.

**End-of-year reports:** The first batch of reports (Y2 to Y5) are now ready for collection from the school entrance between 9.30 and 12noon each day. Any that are not collected will be posted on Friday. We hope that you like the adapted report format and enjoy the comments of our staff. We have not included an official feedback form but if you do have any comments or questions please do email us.

**Y5 Scarborough Visit:** As you will be aware our Y5 residential to Scarborough was postponed from the original dates in May to September, just after the Summer holidays and when the children have started Y6. We expect that it will still be too complex and difficult to support the children with a residential visit at this time so we have decided to postpone the visit further. We are exploring all possible dates later in the new school year and we will write to you in due course. Refunds on deposits are available from the school office. Please contact the school office for a refund.

**Learning Projects and Home Support:** This week's theme is 'The Rainforest.' We have also included some excellent wellbeing projects that we have 'pinched' from our friends at Oxspring Primary School! We included these as we know that the lockdown has been a significant mental challenge for many pupils and parents, could we just remind everyone that we are here if you need us and we also have Mrs Kent, Mrs Walker and/or Sonia, our school counsellor, ready and able to chat/support if needed! We hope that you enjoy them! Our website link [www.springvaleprimary.org/curriculum](http://www.springvaleprimary.org/curriculum) provides everyone with a wide range of resources. **Please note that we are committed to offering home learning until all children return safely.**

Updates and reminders:

- Emergency group bookings must be made by lunchtime by a Wednesday for the following week registers to allow time to organise staffing, groups and safety measures.
- Our sharing libraries will be back out in the shelter between 10am and 2pm each Tuesday and Friday

Stay safe everyone and thank you for your continued outstanding support.

**Kind Regards, Mr L McClure, Headteacher**