

The Star

By Jane Taylor



4 Twinkle, twinkle, little star,
10 How I wonder what you are!
16 Up above the world so high,
22 Like a diamond in the sky.

28 When the blazing sun is gone,
33 When he nothing shines upon,
39 Then you show your little light,
44 Twinkle, twinkle, all the night.

50 Then the traveller in the dark,
56 Thanks you for your tiny spark,
64 He could not see which way to go,
70 If you did not twinkle so.

77 In the dark blue sky you keep,
83 And often through my curtains peep,
89 For you never shut your eye,
96 Till the sun is in the sky.

102 As your bright and tiny spark,
108 Lights the traveller in the dark
115 Though I know not what you are,
119 Twinkle, twinkle, little star.



Quick Questions

1. Who does the star help in the poem?

2. Find and copy a word from the text that describes the sun.

3. What do you think that the lines **For you never shut your eye, Till the sun is in the sky** describe?

4. Use 20 words or fewer to sum up this poem.

The Star

By Jane Taylor



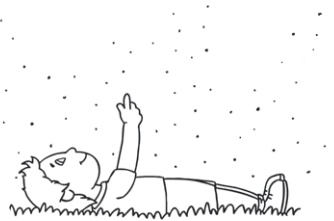
4 Twinkle, twinkle, little star,
10 How I wonder what you are!
16 Up above the world so high,
22 Like a diamond in the sky.

28 When the blazing sun is gone,
33 When he nothing shines upon,
39 Then you show your little light,
44 Twinkle, twinkle, all the night.

50 Then the traveller in the dark,
56 Thanks you for your tiny spark,
64 He could not see which way to go,
70 If you did not twinkle so.

77 In the dark blue sky you keep,
83 And often through my curtains peep,
89 For you never shut your eye,
96 Till the sun is in the sky.

102 As your bright and tiny spark,
109 Lights the traveller in the dark
116 Though I know not what you are,
120 Twinkle, twinkle, little star.



Answers

1. Who does the star help in the poem?

The star helps the traveller in the dark.

2. Find and copy a word from the text that describes the sun.

blazing

3. What do you think that the lines **For you never shut your eye, Till the sun is in the sky** describe?

Accept any reasonable answer, such as: I think that the lines For you never shut your eye, Till the sun is in the sky describe how the stars can be seen at night but not in the day time.

4. Use 20 words or fewer to sum up this poem.

Pupils' own responses, such as: It is dark at night when the sun has gone. The stars twinkle and light the way for the traveller.