

Division using factors

1 Complete the divisions using factors.

a)



$$260 \div 20 = \square$$

b)



$$360 \div 30 = \square$$

c)



$$240 \div \square = \square$$

d)



$$480 \div \square = \square$$

2 Jack and Rosie are calculating $816 \div 48$
 Jack divides by 8 and then by 6
 Rosie divides by 12 and then by 4

a) Show that they get the same answer.

b) Explain why Jack and Rosie get the same answer.

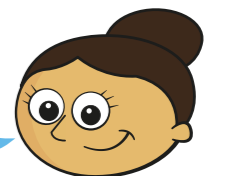
c) Which is the easiest method? Why?

3 Mo and Dora are calculating $2,560 \div 16$



Mo

I will divide by 10, then divide by 6



Dora

I will divide by 4, then divide by 4 again.

Who is correct? Show your workings.

_____ is correct.

